

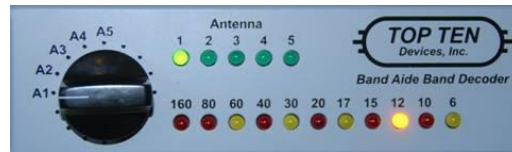
# STATION AUTOMATION

Latest generation technology



# Three generations

1. **BAND DECODERS** –band decoding and band switching



2. **SAC X(Smart ANTENNA Controller) and Station Master** – smarter, some programming, but still limited



3. **SSC XL (Smart STATION Controller)** – newest concept with more flexibility - SKY is the limit!



# Nowdays Minimum Requirements

- Programability and Flexibility (Any button to any IN-OUT functionality)
- TCP/IP – easy networking and remote control
- Stand alone and PC controlled
- Advanced Interlock function
- TX status through network
- Open source and upgradability
- Easy for use

# SSC XL

Newest Smart Station Controller

## FIRST WW PROMOTION at CCF Meeting 2014



# FLEXIBILITY

## OUTPUTS

The screenshot displays the 'Output settings' window of the SSC XL software. At the top, there are three output sections: 'AUX OUTPUTS 1' (8 slots), 'AUX OUTPUTS 2' (8 slots), and 'MASTER DEVICE OUTPUTS' (24 slots). Below these is a control panel with various parameters like BAND, MODE, and TX. A central display shows '403A Signature' and 'USA'. To the right, a 'Virtual' keypad is shown with buttons for '4 SQUARE', 'USA', 'JA', 'VK-ZL', and 'PY'. Below the keypad is a list of output settings with checkboxes and labels like 'USA', 'JA', 'VK-ZL', and 'PY'. A physical keyboard is shown at the bottom left, with a red circle highlighting the 'USA' key. Red lines connect the 'USA' key on the physical keyboard to the 'USA' button on the virtual keypad, and from the 'USA' button on the virtual keypad to the 'USA' button in the output settings list. An orange box highlights the virtual keypad area.

## BUTTONS

# Programmability-OPEN SOURCE

Unlimited number of button groups

Configuration Connection

MAIN ANTENNAS 4 SQUARE x BAND DECODER +

Basic settings

Button set title

4 SQUARE

Band Sub-Group

80M x +

Group settings

Band selector 80m

Template

Blue Silver Yellow Green WinTest

Group buttons

Active	Button name	Windows Key	Keyboard Key	Toggle	Outputs	FTI
<input checked="" type="checkbox"/>	Button 1	< key not set >	< key not set >	<input type="checkbox"/>	Set outputs...	Delete
<input checked="" type="checkbox"/>	Button 2	< key not set >	< key not set >	<input type="checkbox"/>	Set outputs...	Delete
<input checked="" type="checkbox"/>	Button 3	< key not set >	< key not set >	<input type="checkbox"/>	Set outputs...	Delete
<input checked="" type="checkbox"/>	Button 4	< key not set >	< key not set >	<input type="checkbox"/>	Set outputs...	Delete

Any output

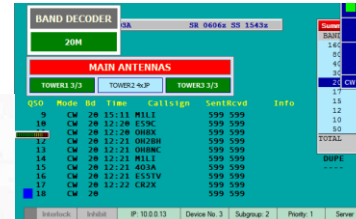
Unlimited number of buttons in group

Button behavior

# INTERFACE

TCP/IP

PC



Ext KYB



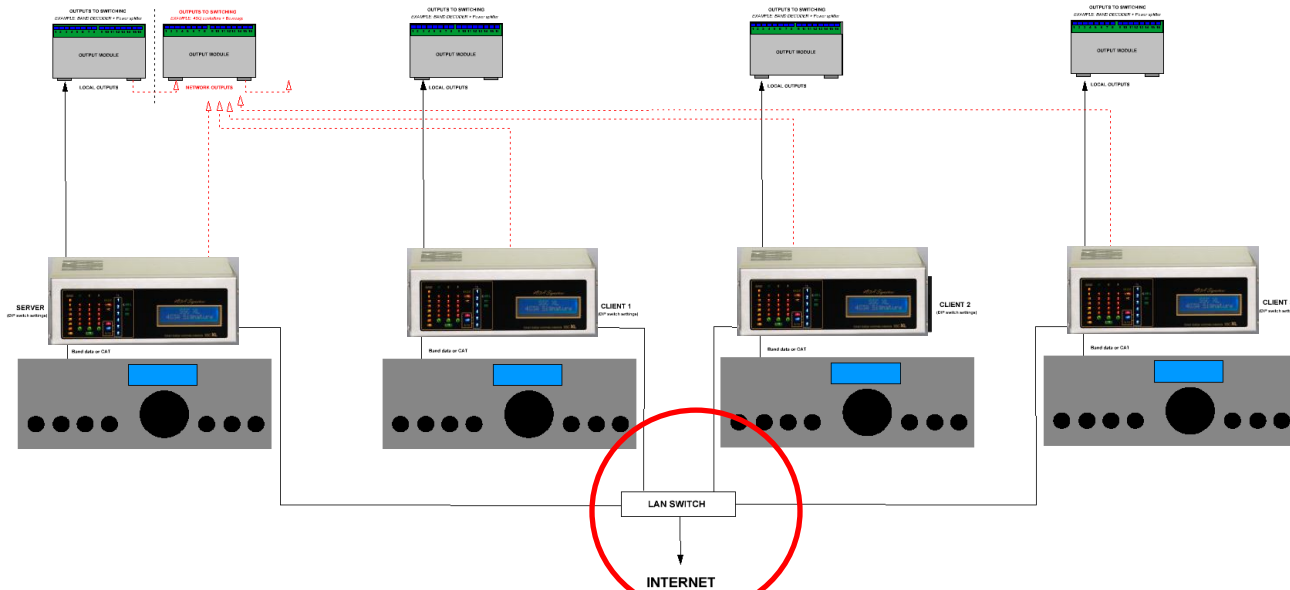
# SIMPLE TO USE

- **Push button functionality**
- *Interlock*
- *Priority*
- *PC or KYB Mode*
- *IP addressing*
- *SUB Group addressing*
- *Server-Client*





# TCP/IP – Plug and Play networking

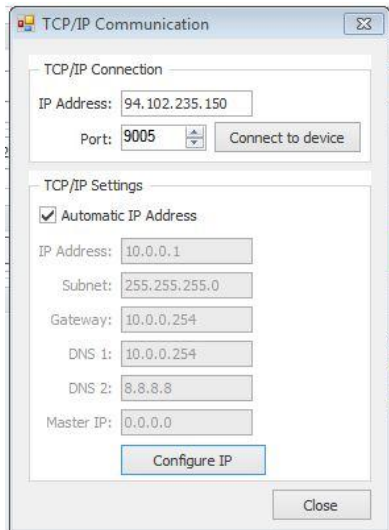


Simple LAN switch



## Auto IP addressing for Plug and Play networking

# TCP/IP-REMOTE



BAND DECODER

20M

MAIN ANTENNAS

TOWER1 3/3

TOWER2 4x3P

TOWER3 3/3

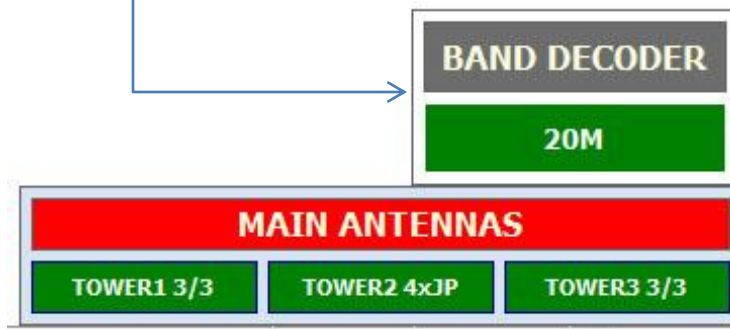


# TCP/IP-REMOTE



REMOTE HOME AUTOMATION

REMOTE RADIO

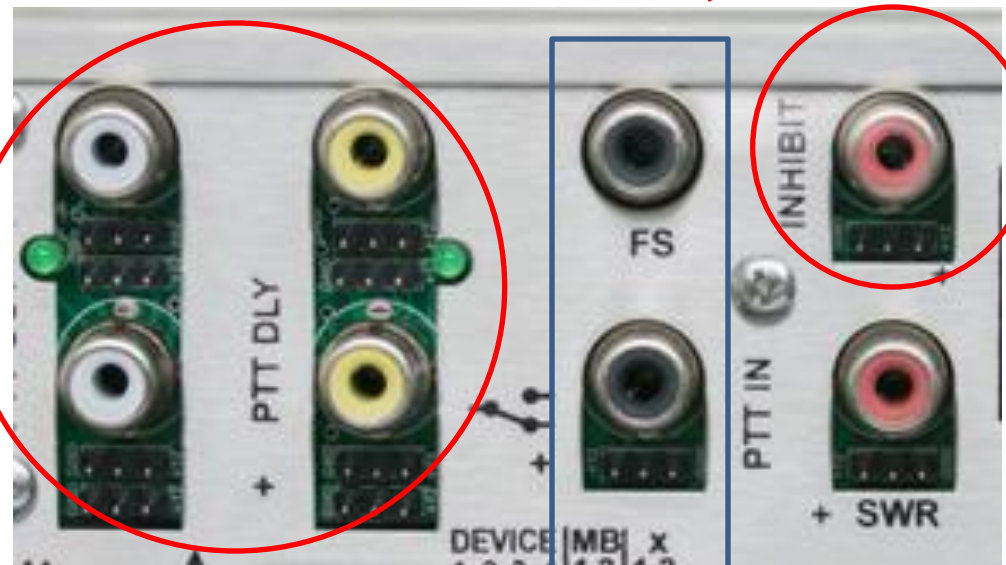


# Push button INTERLOCK



Inhibit execution:

- +12V/GND output
- PTT outs disabled

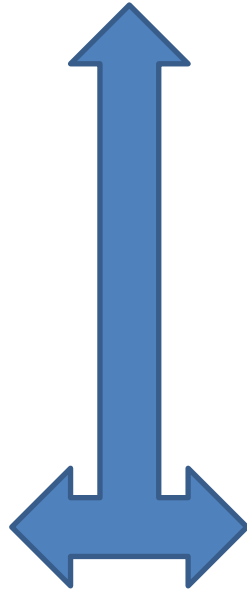


PTT inputs

# Push button INTERLOCK



TX status through NTW



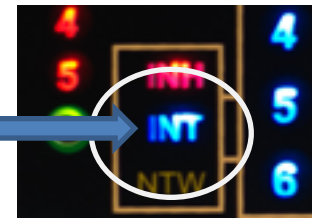
**BAND DECODER**  
20M

**MAIN ANTENNAS**  
TOWER1 3/3    TOWER2 4xJP    TOWER3 3/3

QSO	Mode	Bd	Time	Callsign	Sent	Rcvd	Info
1	CW	20	15:10	YU5A	599	599	
2	CW	20	15:10	YU1EW	599	599	
3	CW	20	15:10	YU1EXY	599	599	
4	CW	20	15:10	YU1BAU	599	599	
5	CW	20	15:10	YU1RL	599	599	
6	CW	20	15:10	YU1XX	599	599	
7	CW	20	15:10	YT1XX	599	599	
8	CW	20	15:10	K3LR	599	599	
9	CW	20	15:11	M1LI	599	599	
10	CW	20		Z6/S5	599	599	3

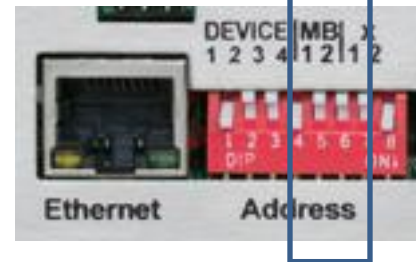
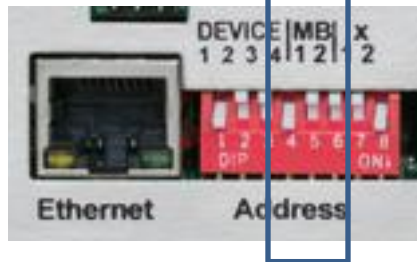
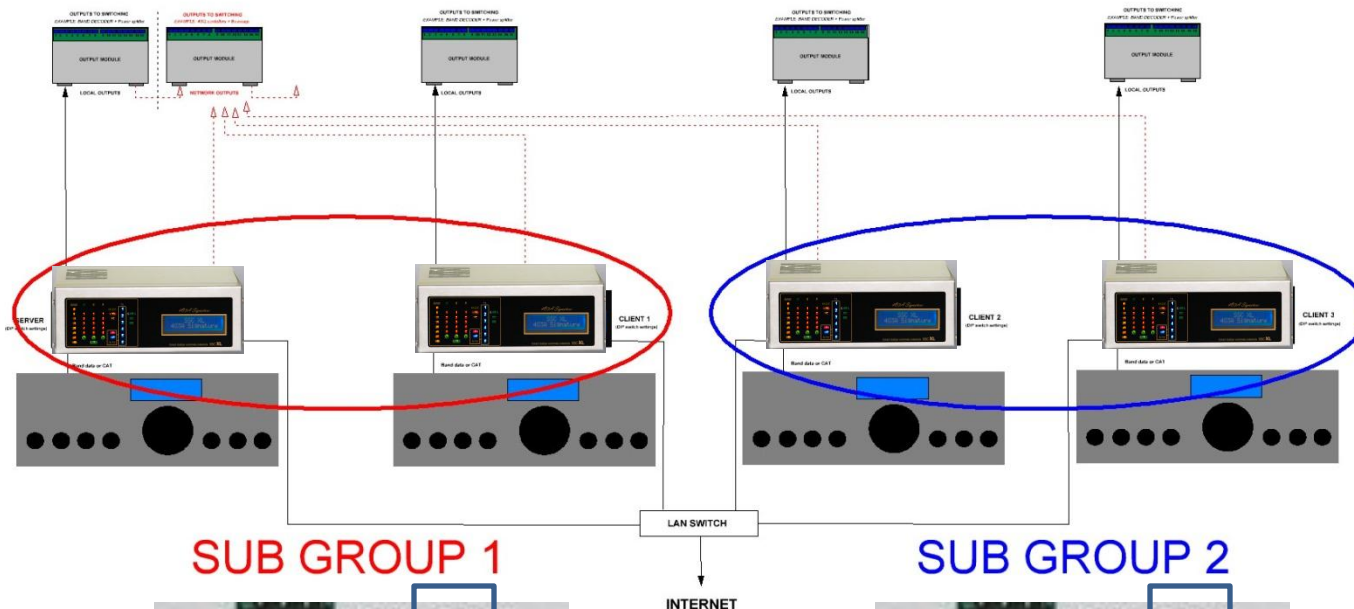
**Interlock**    Inhibit    IP: 10.0.0.10    Device No. 3    Subgroup: 2    Priority: 1    Server

Front LED/PC BAR

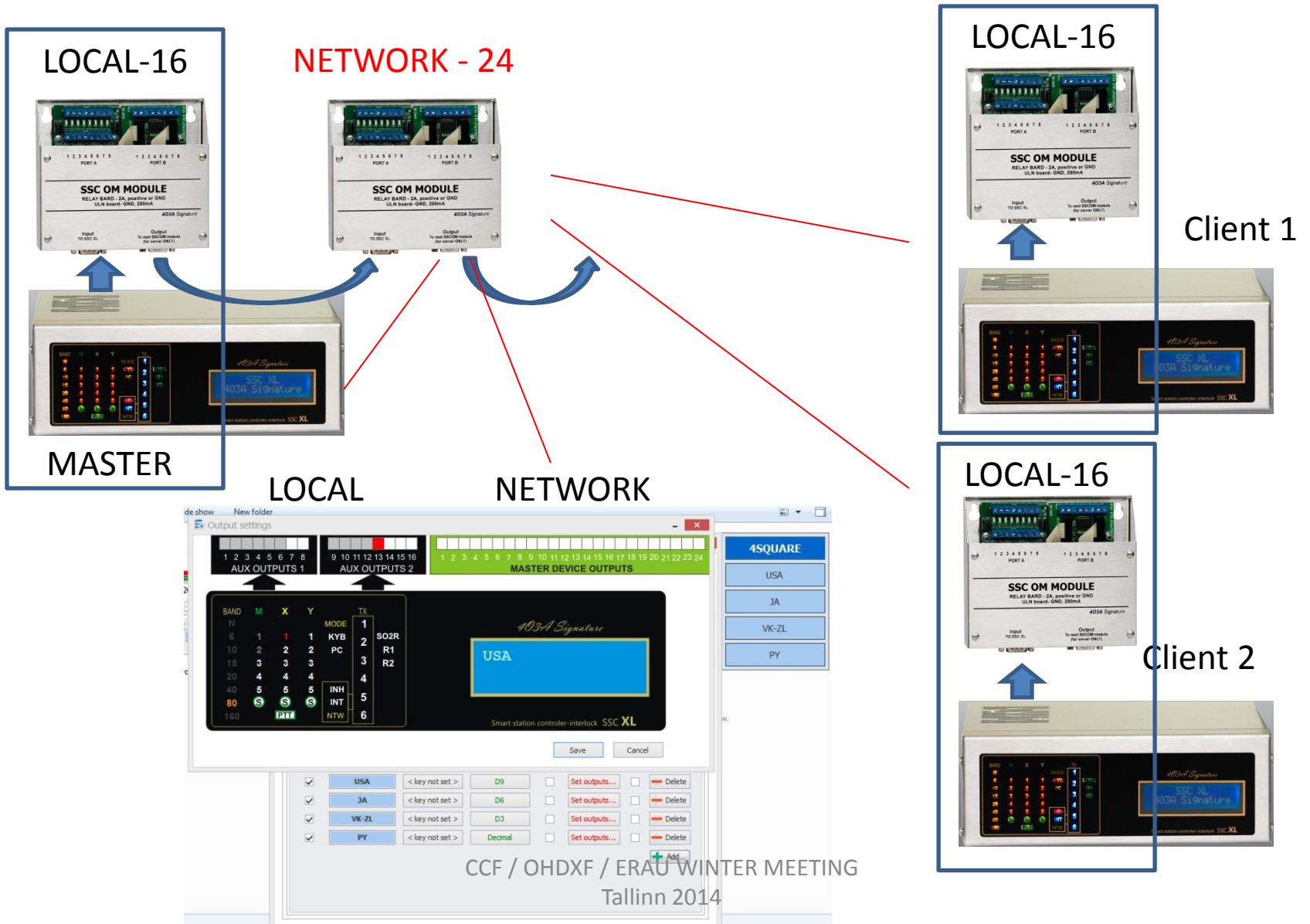


# INTERLOCK

## SUB Group for Multi Op



# LOCAL-Network OUTPUTS



# MS Setup with 3 interlocked stations

ARRL 10M 2013 (New Zone 15 record)





# COMING SOON

SRC XL – Rotator controller for 4 analogue and 2 RS232 rotators – TCP/IP  
Remotely controlled



TCP/IP

# COMING SOON

1. No Tune
2. 1500W
3. Real time SO2R
4. Light – 7kg
5. APC - Automatic Power Control
6. 100% Duty Cycle
7. Remotely controlled

## SSA-XL

### full legal power from latest technology

1500W output from 1.8 to 50MHz including WARC bands

only 7kg >200W/kg

403A Signature

Detailed info: [www.SSA-XL.com](http://www.SSA-XL.com)



Uniquely powerful, efficient, robust, linear  
lightweight & compact

#### Specifications:

Two state-of-the-art LDMOS devices rated 1400W each

Efficiency > 65%

RF output 1500W ICAS SSB, CW, digital modes

Fast automatic band selection controlled by all modern transceivers

**SO2R compatible** - contest on two bands simultaneously with one amp

Built-in Ethernet for TCP/IP WAN (remote) & LAN control & monitoring

Built-in 240VAC power supply

Smallest legal power amplifier 113xW26xD30 (cm)

**Lightest legal power amplifier 7kg**

Unique output filtering & harmonic level monitoring

Advanced protection circuitry

CCF / OHDXF / ERAU WINTER MEETING  
Tallinn 2014

**SKY SAT**

Address:  
SKY SAT doo  
Ratiševina bb  
85347 IGALO, Montenegro

Contact:  
email [4o3a@t-com.me](mailto:4o3a@t-com.me)  
[www.4o3a.com](http://www.4o3a.com)  
+382/ 68 300 000

403A Signature